



MAG2000GX™

10,000 watt cutting system

MAG2000GX™ is a complete system with 10,000 watts Lincoln Ranger™ suitable for exothermic ignition, cutting, and light welding assignments in marine underwater settings. Ships with gauges, cables and consumables so the system is turn-key when fitted with an oxygen cylinder. Cylinders can be ordered separately. The system includes fifty foot of cables and oxygen hose with ground clamp and knife switch. A preset oxygen regulator along with patented style cutting consumables will cut virtually any ferrous or nonferrous material in seconds. Like our other cutting systems, a 400 amp stinger and welding electrodes are supplied. The entire system fits onto a single pallet and can be shipped anywhere around the globe for immediate deployment.

Ships with the following:

- Magnum marine cutting torch.
 - Flame/arc mode.
- Oxygen hose, 50'
 - Can be ordered longer.
- Preset oxygen regulator.
 - 150 psi standard.
- Welding cables, 50'.
 - Can be ordered longer.
- Patented style flame consumables.
 - Come 50 per box.
- Welding stinger.
 - 400 amps.
- Complimentary welding rods.
 - E-6013 for mild steel.
- Knife Switch.
 - Single throw.
- Spare collet.
 - .375 size.
- Lincoln DC Welder
 - 10,000 watts.
- Online instructional video.
 - www.MagnumUSA.com
- UPS 1 package.
 - 800 lbs. approximate.

Magnum Sea and Land

800-957-4344 Toll Free

760-868-6748 Alternate

760-868-6749 Facsimile

sales@magnumusa.com

Welder specifications:

- 10,000 Watts Peak Single-Phase AC Generator Power- 10,000 watts peak (9,000 continuous) AC generator power for high capacity needs such as a back-up generator, or powering a Pro-Cut® plasma cutter, Invertec® inverter welder, lights, grinder or other power tools.
- AC/DC Welding - Smooth AC/DC welding output for a broad range of stick electrodes, such as Lincoln Excalibur™ 7018 (AWS E7018) and Fleetweld® 5P+ (AWS E6010). The welder is also capable of MIG, Flux-Cored, and TIG welding (with additional optional equipment).
- Rugged Reliability- Rangers have been subjected to an extensive testing program to ensure reliable operation in a wide variety of environmental conditions.
- Engine is a 2 cylinder 4 cycle OHV (overhead valve) air-cooled setup.
- Three-Year Lincoln Warranty- Three-year Lincoln warranty on welder (engine is warranted separately by the manufacturer).

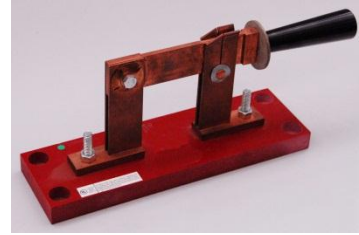


Magnum cutting torch with oxygen control valve and welding cable connection for oxy-flame and oxy-arc capability. Durable torch body designed for outdoor use in extreme conditions. Heavy duty stainless steel valve spring and valve bearing eliminates valve arcing when using a welder. The ergonomic design minimizes hand fatigue during long cutting assignments.





50' of high grade .375 diameter oxygen hose with standard oxygen B connectors.



Knife switch connects to the positive side of the welder for cutting current during change of consumables.



Professional ground clamp.



Patented style marine cutting consumables come fifty to the box and display almost unlimited shelf life. Consumables will cut, gouge or pierce almost any known material in seconds.



50' of high grade welding cable with suitable connectors.



400 amp welding stinger handle to weld materials after they are cut. Displays alligator jaws for precise lock on the welding electrode.



Preset 150 psi oxygen regulator is durable and requires no adjustment. It comes with a popular CGA540 valve connector.



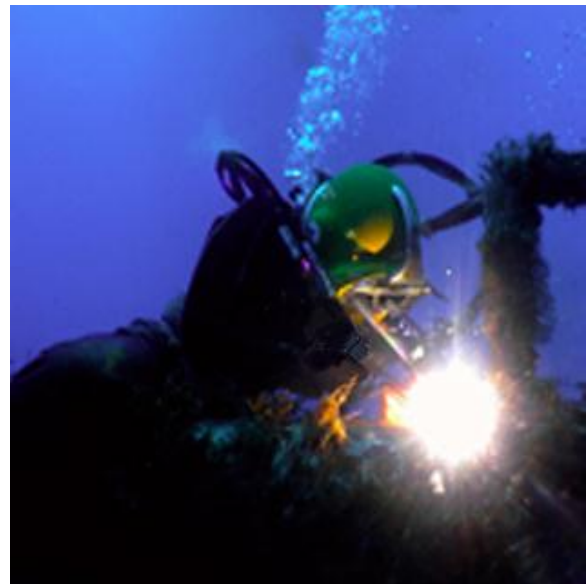
Complimentary welding electrodes for mild steel are wrapped and dipped for years of shelf life.



Spare .375" collet to fit our most popular cutting consumables. Collets available in other sizes.

Online operating instructions:

<http://www.magnumusa.com/cutting-videos.html>



Cylinders and cylinder banks can be ordered separately.